

GAS BOILERS

WALL-HUNG COMBINATION



Minima MX2 Series

Range of Compact
Combination Boilers
24 & 30 kW outputs



C&M
CHAFFOTEAUX & MAURY



Minima MX2 Series adding comfort to the home

Heating and hot water from a world leader



Chaffoteaux & Maury brings to the gas fired heating market over 75 years of experience. In fact it was C&M who invented the first gas fired water heater back in 1925. 1955 saw the launch of the first wall-mounted domestic boiler from C&M. Production of C&M boilers takes place using impressive modern production facilities using one of the most stringent quality control concepts practiced in manufacturing today. This coupled with excellent technical support and after sales service makes C&M the best choice for gas central heating boilers.

Chaffoteaux & Maury Minima MX2 Series



The characteristics of larger boilers without compromises

Minima is an exciting new range of combination boilers from C&M. The modern adage "less is more" can aptly be applied to this new stylish and lightweight appliance. The first thing that will strike anyone when taking their first glance at the boiler are the compact dimensions: at 720x390x290 it is one of the smallest boilers on the market. Just because it's small it doesn't mean that any attributes or features have been compromised. In fact on the contrary, among its design characteristics are easy-to-install features such as no side clearances for ease of installation (install between cupboards etc.) and multiple flue options. Servicing is just as simple as the boiler has been designed with the professional in mind this means that all components are accessible even for the largest hands!



**C&M works
to Benchmark standards**

C&M offers: product quality & service excellence

Quality products born from extensive experience

Great new technical innovations exclusive to Minima

The Minima is an all new boiler series from C&M. Yet it builds upon the wealth of experience developed since 1914 when the Chaffoteaux brothers started their foundry in the Brittany port of Saint-Brieuc. Specialisation in the production of boilers, geysers and storage water heaters started in 1929 when the Maury company was purchased. By 1946 C&M were the french market leaders and in 1970 became the first continental european boiler manufacturer to enter the UK market with the revolutionary new concept; the combination boiler.

C&M have surpassed anticipations by reducing boiler dimensions whilst still ensuring high flow rates. More new features also include built in flue gas analysis point, C.H. and D.H.W independent from one another and accessibility of all components from the front of the boiler. Minima is a boiler that meets and exceeds expectations, disappointing neither the professional or the user.



Excellent service

As part of the multi-national MTS Group since 2001, C&M products are backed-up with the most comprehensive service available:

Comprehensive training across the entire C&M range is available covering all theoretical and practical aspects. Designed for domestic heating installers, merchants and independent gas-heating service organisations; courses are offered at 3 fully equipped training centres in the UK. In addition permanent training facilities are available at a number of technical colleges nationwide.

Our Technical Support Helpline manned by experienced industry professionals, offers only the best in advice; not only before installation, but during and even long after.

Our team of Area Technical Managers are able to assist at a local level with intimate, expert knowledge of the C&M product range be it regarding training, installation advice or general trouble shooting.

The Customer Service team are just a telephone call away answering all user enquiries and offering advice on boiler operation. They also ensure that in the unlikely requirement of an aftersale visit, it is dealt with efficiently and promptly, with the minimum amount of disruption for all.





Minima MX2 Series

Wall-hung combination boilers

Easy to install and maintain



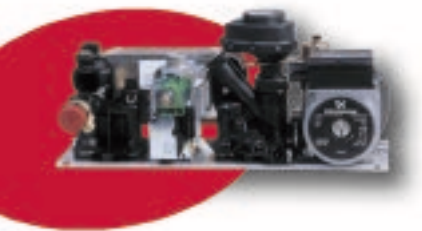
The innovative design of the all new Minima MX2 Series through both intensive and direct research takes into account the importance of essential features for the installer. Not only at the installation stage, but also for future periodic servicing, thus ensuring an installer can offer the maximum in professional service.

Existing installation features across the C&M range: pre-installation kit (hanging bracket, pipes and tails, filling loop, cold water filter, paper template with configuration with other popular brands for easy boiler replacement) and auto-diagnostics, wide range of accessories, highly flexible flueing options, clear and concise servicing and installation manual.

Features new to Minima include: quick release casing using a toggle-latch system (which is lockable with padlock avoiding any tampering by unauthorised persons), flue gas analysis point (reducing servicing time), zero side clearance with components accessible from the front, removable water group and U-clip connections for hydraulic components.

Benefits for the installer

- Quick and easy installation.
- Installation kit with built-in filling loop.
- Integral auto-diagnostic display.
- Lightweight.
- 2 outputs available.
- High D.H.W. flow rates .
- Combustion analysis port.
- Easy to service and maintain: all components accessible from the front of boiler.



Neat and trustworthy - the best choice

Easy to use and reliable

Not only should a boiler be beneficial to the installer, it equally must offer true benefits to the user. This, of course, must be along with unrivalled levels of comfort. Most importantly for the user it provides efficient heating, high domestic hot water flow rates and is quiet in operation. The boiler controls are simple to use allowing for finite control of both hot water and central heating temperatures with a visible LED display. As an option a mechanical or digital time clock is available to control activation of the central heating. The performance users want is delivered thanks to the combination of some of the best technology available and nearly a century of experience. Minima MX2 is not just another white box on the wall!



Benefits for the user

- Simple to use.
- Stylish modern compact design - attractive appearance.
- High D.H.W. flow rates up to 12.2 l/min (2.7 gal/min) (30 kW - 102,400 Btu/h version).
- Low volume, saving valuable space in the home.
- Copious amounts of hot water on demand.
- Simple to use control panel with hot water and heating temperature display.
- Enabled for the addition of mechanical or a digital time clock.
- Comprehensive guarantee.
- Guarantee extendable year-on-year.



Minima MX2 Series

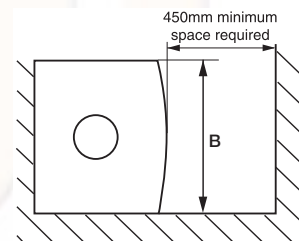
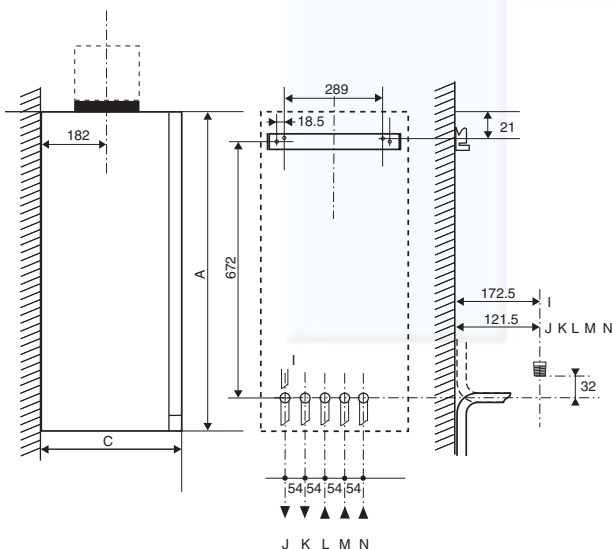
Wall-hung combination boilers



- Modern design and compact dimensions (720x390x290 mm).
- Available in 2 outputs of 24.0 kW - 81,900 Btu/h or 30.0 kW - 102,400 Btu/h.
- Easy to use control panel with heating and domestic hot water adjustment.
- Fully modulating in C.H./D.H.W. with an accuracy to $\pm 1^{\circ}\text{C}$.
- Auto-diagnostic system and integrated control in P.C.B.
- Built-in anti-frost device.
- Built-in anti-scale device.
- Built-in anti-seizing device for the pump and 3-way valve.
- Soft ignition - quieter start up.
- Tamper proof quick release latches - easy disassembly.
- Built-in automatic by-pass.
- Easy to use
- Simple installation.
- Easily installed between kitchen cabinets - 0 mm side clearance.
- All components accessible from the front of the appliance.
- Guarantee extendable year-on-year.

Legend

I	Safety valve	L	Gas supply
J	Heating flow	M	Cold water inlet
K	D.H.W. outlet	N	Heating return



Dimensions in mm	A	B	C
MX2 24 FF	720	390	290
MX2 30 FF	720	390	290

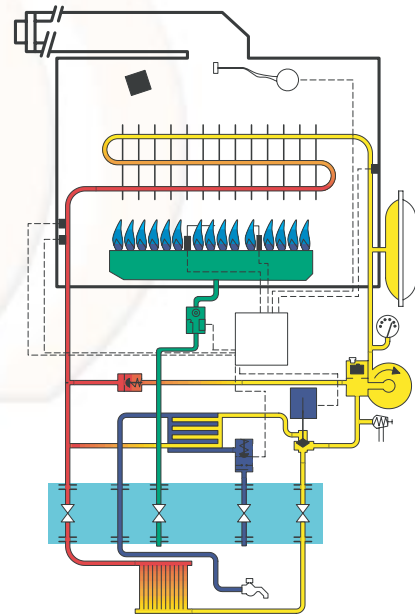
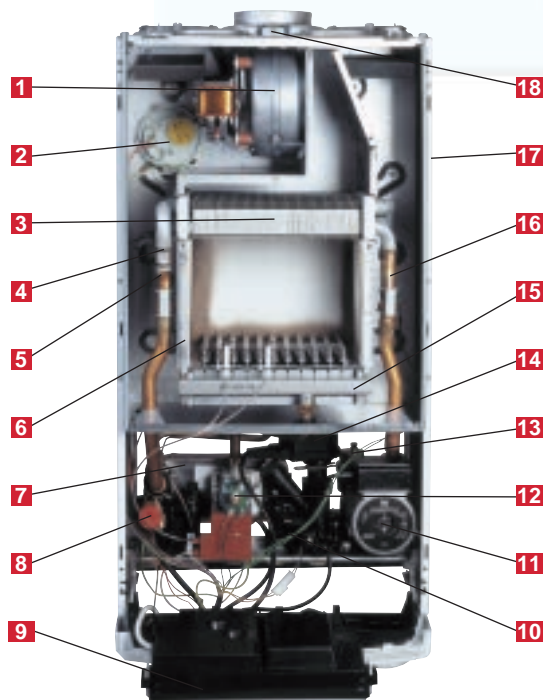


IPX4D

Minima MX2 Series - Technical Specification

Model		MX2 24 FF	MX2 30 FF
Heat Input min/max	kW	12.0 / 26.1	12.0 / 33.0
Heat Input min/max	Btu/h	40,900 / 89,000	40,900 / 112,600
Heat Output min/max	kW	8.0 / 24.0	8.0 / 30.0
Heat Output min/max	Btu/h	27,300 / 81,900	27,300 / 102,400
SEDBUK Rating	Band	D	D
D.H.W. Flow rate ΔT 35°C	litres	9.8	12.2
D.H.W. Maximum Temperature Range	°C	40 - 60	40 - 60
Domestic Hot Water Pressure min/max	bar	0.1 / 10.0	0.1 / 10.0
Gas Type		Natural Gas / LPG	Natural Gas / LPG
C.H. Minimum Temperature	°C	35.0	35.0
C.H. Maximum Temperature	°C	85.0	85.0
Built-in Expansion Vessel Capacity	l	6	8
Built-in Expansion Vessel Pre-charged Pressure bar		0.8	1.0
Maximum Heating Pressure	bar	3	3
Electrical Supply	V/Hz	230/50	230/50
Power Consumption	W	150	150
Protection Grade of Electrical System	IP	X4D	X4D
Internal Fuse Rating F1/F2	A	2/1.25	2/1.25
External Controls	V	24	24
Lift Weight	kg	35.0	38.0
G.C. Number		47-980-28	47-980-29

Functional Diagram



Legend

1	Fan	11	Standard pump head
2	Air pressure switch	12	Gas valve
3	Heat exchanger	13	Automatic air vent
4	High limit stat	14	3-way valve
5	Thermistor (Flow)	15	Burner assembly
6	Combustion chamber	16	Thermistor (Return)
7	Secondary heat exchanger	17	Steel chassis complete with expansion vessel
8	Pressure relief valve	18	Flue gas analysis point
9	Electrical box		
10	D.H.W. flow switch		



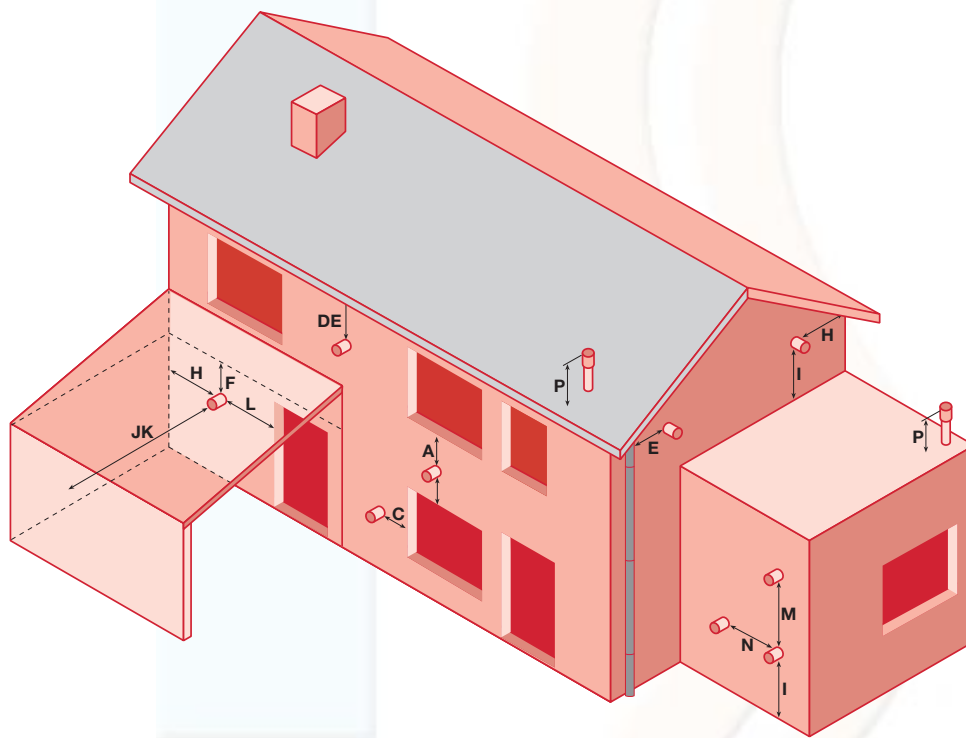
Flue Pipe Accessories

For any situation - making installation easier

C&M boilers are designed to be completely adaptable to every possible flue situation that may be encountered in boiler installation.

The need for alteration of flue components is almost completely eliminated, making the installation of the boiler quick and simple.

It is possible to site flue terminals in a variety of positions in accordance with BS5440-1:2000.

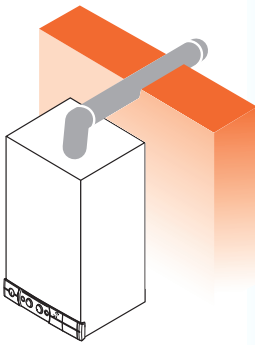


Installation Conditions

Terminal Position	mm
A Directly below an opening, air brick, opening windows, etc	300
B Above an opening, air brick, opening windows, etc	300
C Horizontally to an opening, air brick, opening windows, etc	300
D Below gutters, soil pipes or drain pipes	75
E Below eaves	200
F Below balconies or car port roof	200
G From vertical drain or soil pipe	150
H From an internal or external corner	300
I Above ground roof or balcony level	300
J From a surface facing the terminal	600
K From a terminal facing the terminal	1200
L From an opening in the car port (e.g. door, window) into the dwelling	1200
M Vertically from a terminal on the same wall	1500
N Horizontally from a terminal in the same wall	300
P Fixed by use of terminal and matched flashing plate	-

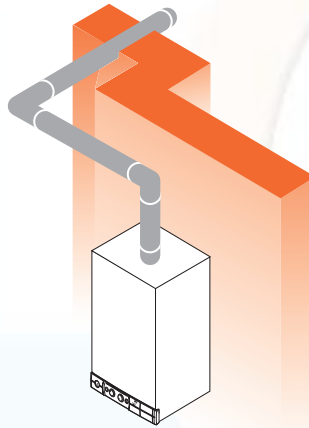
Coaxial system up to 4 m horizontal and vertical (60/100)
 Twin pipe system up to 28 m (MX2 24 FF) 20 m (MX2 30 FF)

STANDARD HORIZONTAL



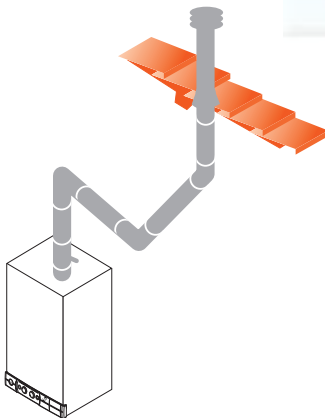
Horizontal 60/100 mm diameter.

RAISED HORIZONTAL



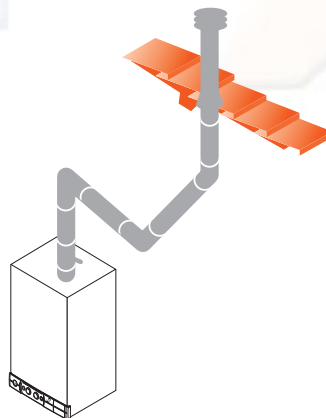
Elevated Horizontal 60/100 mm diameter vertical exit from appliance.

VERTICAL



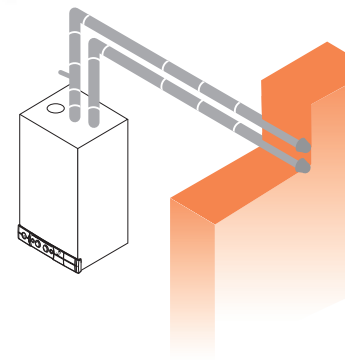
Vertical Concentric 60/100 mm diameter (max. length 6m).

VERTICAL



Vertical Concentric 80/125 mm diameter (max. length 6m).

TWIN PIPE (BIFLUX)



Twin Pipe / Biflux 80/80 mm diameter.

Accessories

Simple to use options for the ultimate installation flexibility

Pre-Installation kit

Supplied with the boiler as standard

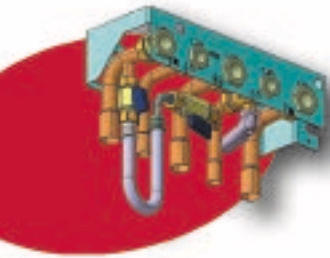
The jig-kit makes installation easier because it allows you to fill the system even without the boiler fitted. It is equipped with 4 isolation valves: 2 for the heating circuit, 1 for the domestic water system and for 1 for the gas.

The system return isolation valve can be connected to the system cleaner using the cap provided.

The kit is supplied with:

- Double non-return valves on the filling loop for filling the system;
- Copper tail pipes to ease soldering to the system pipe work.

Pre-installation kit (hanging bracket, pipes and tails, filling loop, cold water filter, paper template with configuration with other popular brands for easy boiler replacement).



Time clocks

Combination boilers supply instant hot water therefore eliminating the need for pre-heating a store of water.

Mechanical time clock

This easy to use 24 hour time clock allows the user to set the central heating to automatically switch on for 15 minutes or more as many times as desired in a 24 hour period.



Digital time clock

The addition of a 7 day digital time clock allows the user to program the central heating to operate in conjunction with their lifestyle and weekly routine. It is possible to set the boiler to turn on and off at 20 preset times depending on which day of the week it is; allowing users to differentiate setting between weekdays and the weekend for example. It is also possible to override the automatic settings and operate the boiler manually at any time.



Accessories

Rear piping spacing kit

Allows easy installation of the boiler in situations where the pipes need to run behind the rear of the boiler. The rear piping spacing kit consists of a bracket to hang the boiler on with two flanks that extend the side panels of the boiler to allow the pipes to run behind. All pipework for connection to the system is included with this accessory.

**Available
soon**

System cleaner

A practical accessory for cleaning the heating system. It is simple to use: connect the system cleaner to the system return isolation valve, open the system return isolation valve, switch on the boiler, allow the pump to run for the necessary time then remove the system cleaner from the kit. The filter provided is made up of a removable cartridge which collects any impurities in the system. This allows the flushing of a new heating system without the impurities damaging the boiler components. The system cleaner can also be used to add chemical additives such as inhibitors.



GAS BOILERS

WALL-HUNG COMBINATION



Month & Year Printed by Vario Press

In the interests of our customers, MTS (GB) Limited is continually developing these products to improve both performance and design. We therefore reserve the right to change specification without prior notice. This brochure is accurate at the date of printing. Consumer statutory rights are not affected.



MTS (GB) Limited

MTS Building, Hughenden Avenue,
High Wycombe, Bucks HP13 5FT
Tel: 01494 755600
Fax: 01494 459775
Technical Support Help Line: 01494 539579
www.chaffoteaux.co.uk

